



## EYD and ECD series Drain seals and breathers



### Approvals / Characteristics



### Features

- Drain to provide continuous, automatic drainage of condensate
- Large openings with threaded closures to provide easy access to conduit hubs for making dams
- Integral bushings to protect conductor insulation from damage
- Tapered-tapped hubs to ensure ground continuity standard materials

### Certification and standards

UL Listed and CSA Certified for hazardous locations:

EYD11 — 31-TB

Class I, Division 1 & 2, Groups A, B, C, D; Class II, Division 1, Groups E, F, G; Class III

EYD41 — 101-TB

Class I, Division 1 & 2, Groups C, D; Class II, Division 1, Groups E, F, G

Class II, Division 2, Groups F, G

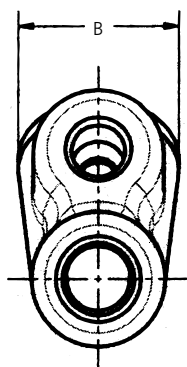
Class III

UL Standard: 886

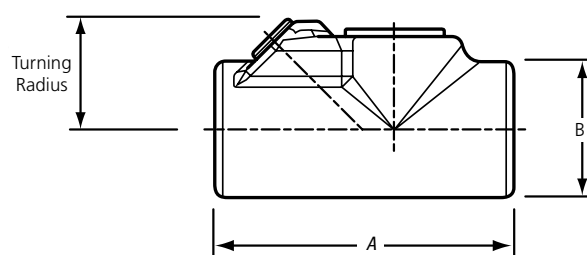
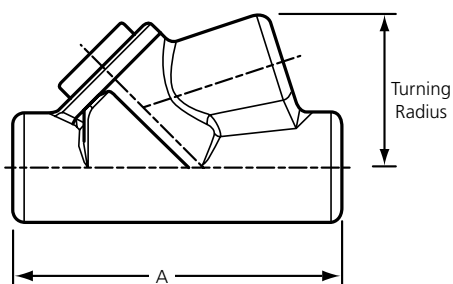
CSA Standard: C22.2

# Drain seals and breathers - EYD and ECD series

## Dimensions



EYD 1/2" - 1"



## Technical specifications

### EYD - drain seals



Type	Hub Size	Dimensions inches		
		A	B	Turning Radius
EYD11-TB	1/2"	3.81	1.50	1.75
EYD21-TB	3/4"	4.08	1.75	1.98
EYD31-TB	1"	4.85	2.19	2.19
EYD41-TB	1 1/4"	5.00	2.25	1.80
EYD51-TB	1 1/2"	5.44	2.44	2.00
EYD61-TB	2"	6.25	3.00	2.32
EYD71-TB	2 1/2"	7.50	3.50	2.69
EYD81-TB	3"	8.50	4.25	3.15
EYD91-TB	3 1/2"	9.19	4.75	3.38
EYD101-TB	4"	9.75	5.25	3.64

### ECD - drain breathers



Type	Hub Size	Dimensions inches	
		B	
ECD15	1/2"	.975	
ECD384	3/8"	.407	
ECD284	1/4"	.327	

#### Size range

All sizes are listed in the tables on each page for each cat. no.

#### Materials

Bodies and drain covers - gray iron alloy and/or ductile iron  
 Closure for drain - copper-free aluminium or ductile iron  
 Small closure plug - gray iron alloy and/or steel  
 Drain — stainless steel  
 Removable nipples - steel

#### Finish

Gray iron alloy and ductile iron - electrogalvanized and aluminium acrylic paint  
 Copper-free aluminium - natural  
 Stainless steel - natural  
 Steel - electrogalvanized